

# Acute Pyelonephritis - Correlation of Clinical Parameter with Radiological Imaging Abnormalities

LEELAVATHI VENKATESH<sup>1</sup>, RAMALINGIAH KARADAKERE HANUMEGOWDA<sup>2</sup>

## ABSTRACT

**Introduction:** Pyelonephritis (PN) is a suppurative infection of the kidney, most commonly due to bacterial infection and may be either acute or chronic. Acute PN (APN) subdivided into uncomplicated and complicated. Severity of PN cannot be assessed by clinical or laboratorial parameters alone, radiological imaging such as Ultrasound (USG) abdomen, Computed Tomography (CT) is required to know the nature, extent and severity of disease and for planning interventions.

**Aim:** The aim of this study was to compare clinical and biochemical parameters with radiological findings (USG/CT) among patients diagnosed to have PN.

**Materials and Methods:** The medical records of all patients admitted with PN at the Institute of Nephrourology, Bangalore from January 2016 to December 2016 were reviewed. Their clinical and biochemical parameter were compared with radiological findings. Statistical analysis was performed with Statistical Package for the Social Sciences (SPSS) Version 15.0.

**Results:** There were 100 patients diagnosed with PN in the study period. Mean age of patient was 48.7 years and PN was common among females (62%). Classical triad of PN was present in 87% of patients. Acute kidney injury was present in 47% of patients. Diabetes (69%) was the most common comorbid condition. Positive urine culture was found in 24% of patients. USG abdomen was performed in all patients and it was suggestive of APN in 66% cases. CT abdomen was available for 74% and it revealed PN in 70%, of patients. Among these Emphysematous PN (EPN) was found in 4% and renal abscess in 3% of patients. In this study, USG findings of PN were correlated with triad of PN symptoms and those who had PN for the first time.

**Conclusion:** In this study, majority of the patients presented with clinical triad of PN-fever, flank pain and dysuria. Urine culture was positive only in few cases. USG was able to diagnose large number of PN cases except emphysematous change and renal abscess which was detected by CT. The detection of PN was better with CT when compared to USG.

**Keywords:** Computed tomography, Diagnosis, Renal abscess

## INTRODUCTION

APN is defined as a bacterial or fungal infection of the renal parenchyma and collecting system. The diagnosis is based on a combination of clinical and laboratory findings. Clinical features include increased urinary frequency, dysuria, flank pain and a high-grade fever (>38.5°C) with rigors. Laboratory findings include pyuria, white cell casts, and a positive urine culture. APN occurs as a result of bacterial invasion of the renal parenchyma from ascending infection from the lower urinary tract. Haematogenous spread to the kidneys occurs less commonly. APN is subdivided into uncomplicated and complicated. Complicated PN is associated with an abnormal urinary tract, obstruction, stones, immunocompromised state, diabetes, pregnancy. The clinical spectrum of acute PN ranges from mild illness to pyonephrosis and emphysematous PN with a fulminant course [1].

Patients with mild symptoms of APN can be managed in an outpatient setting. But, those presenting with life-threatening complications like shock, septicaemia and multi-organ failure require hospitalization. Mortality due to APN varies from 1% to 12% [2].

The British Medical Research Council Bacteriuria Committee defined APN as a clinical syndrome of flank pain, costovertebral tenderness, fever and laboratory findings of renal infection including leucocytosis, pyuria, haematuria, bacteriuria, positive urine culture and rarely bacteraemia [3].

Pathologically, APN is defined as suppurative inflammation of the renal parenchyma and pyelocalyceal system distributed along one or more medullary rays supporting an ascending route of infection [4]. Radiologically, on Contrast Enhanced Computed Tomography

(CECT) scans, it is seen as hypoenhancing regions with or without renal swelling and may be focal or diffused. APN includes all acute infection related to parenchymal abnormalities without abscess diagnosed radiologically [5].

Severity of PN cannot be predicted with clinical or laboratorial parameters alone. Radiological images such as USG and CT are also necessary to know the nature, extent and severity of disease and to plan intervention if required. CT abdomen will help detect calculi, emphysematous change, parenchymal calcification, obstruction and inflammatory masses. Very few studies are available to correlate the clinical severity of PN with radiological severity of the disease [2,3,6].

Hence, this study was done to compare clinical and biochemical parameters with radiological findings by USG and CT among patients diagnosed to have PN.

## MATERIALS AND METHODS

Medical records of all patients diagnosed with APN admitted at Institute of Nephrourology Hospital Bengaluru, Karnataka, India, from January 2016 to December 2016 were reviewed retrospectively. Patients demographic details, medical history, clinical, biochemical and radiological imaging reports were reviewed.

All the patients diagnosed to have PN based on clinical and/or radiological findings were included in this study.

In this study, the diagnosis of PN was based on clinical and radiological criteria as explained below [2].

- Clinical criteria were the presence of classical triad of PN i.e., fever with chills and rigor; presence of flank pain and pyuria,

defined as greater than 10 white blood cells per high-power field of centrifuged urine sample.

- Radiological diagnosis of PN was made when USG/CT abdomen showed evidence of infection of renal parenchyma, in the form of bulky kidney, compression of renal sinus, perinephric fat stranding, abscess and emphysematous changes.
- EPN is necrotising infection with presence of gas in the renal parenchyma, collecting system or perinephric tissue. Based on CT findings, EPN can be classified as: Class 1: Gas in the collecting system, Class 2: Gas in the renal parenchyma without extension to the extrarenal space, Class 3A: Extension of gas or abscess to the perinephric space, Class 3B: Extension of gas or abscess to the pararenal space and Class 4: Bilateral EPN or solitary kidney with EPN [7].
- Hypotension is defined as a systolic blood pressure of <100 mmHg.
- Acute renal failure was defined as 25% decrease in Glomerular Filtration Rate (GFR) from baseline, according to Acute Dialysis Quality Initiative (ADQI) group.
- GFR is calculated based on the Modification of Diet in Renal Disease (MDRD) study equation.

## STATISTICAL ANALYSIS

Statistical analysis was performed with SPSS Version 15.0. Descriptive studies were performed for the cohort. Fischer Exact test were performed for significance. The p value of <0.05 was considered to be significant.

## RESULTS

All patient records fulfilling the inclusion criteria were included for analysis. The study includes 100 patient records. Mean age of patient were 48.7 years (range 15 – 85), majority of them were more than 40 years (70) with female (62) preponderance. Among them, three females were in 2<sup>nd</sup> trimester of their pregnancy. Classical triad of PN was present in 87 of patients. Renal function was normal in 21 patients. Acute kidney injury secondary to PN was present in 47 patients. PN was present in 32 chronic kidney disease patients. Risk factors and comorbidities are represented in [Table/Fig-1]. Diabetes (69) was the most common comorbid condition. Recurrent PN was

Parameter	Number	
Age (years)	<18	03
	18-30	09
	31-40	18
	41-50	23
	51-60	22
	>60	25
Sex	Male	38
	Female	62
Triad of PN	87	
Septic shock	07	
Diabetes mellitus	69	
pregnancy	03	
Renal calculi	09	
Benign prostatic hyperplasia	01	
Recurrent PN	16	
Renal function	Normal	21
	AKI	47
	CKD	32

**[Table/Fig-1]:** Demographics and comorbidities of patients. (Triad of PN-Fever, flank pain, dysuria, DM-Diabetes Mellitus, HTN-Hypertension, AKI-Acute kidney injury, CKD-Chronic kidney disease, BPH-Benign prostatic hyperplasia.)

documented in 16 patients. History of renal calculi was noted in 9 patients.

## Biochemical Findings

Leucocytosis was present in 68 patients and thrombocytopenia was found in 16 patients. Pyuria was present in 87 patients. Microscopic hematuria was present in 21 patients. Positive urine

Urine microscopy	Pus cell >10/hpf	87
	Red blood cell >5/hpf	21
Haemoglobin	>10	96
	<10	4
Total WBC count	Normal	32
	Increased	68
Platelets	Normal	84
	Decreased	16
Serum	Normal	21
	Increased	79
Urine culture	No growth	76
	Positive	24
Blood culture	No growth	0

**[Table/Fig-2]:** Biochemical parameters. (WBC - white blood cell, hpf-high power field)

culture was found only in 24 patients. Majority of them had *E coli* infection, followed by *Enterococcus*, *Klebsiella* and *Candida*. None of the patient had positive blood culture. [Table/Fig-2]

## Imaging Parameters

Renal USG [Table/Figure 3] was performed at the time of admission among all patients. It was suggestive of APN in 66 cases, unilateral PN was seen in 40 and bilateral in 26 patients. Other USG findings include - 17 with dilated pelvicalyceal system, 11 had increased echogenicity, three had renal calculi, two showed cyst and one had benign prostatic hypertrophy.

CT abdomen reports were available for 74 patients, it revealed unilateral PN in 33 and bilateral in 30 patients [Table/Fig-3]. Three

Parameters	Number	
USG abdomen	Unilateral PN	40
	Bilateral PN	26
CT abdomen	Unilateral PN	33
	Bilateral PN	30
	Abscess	3
	Emphysematous PN	4

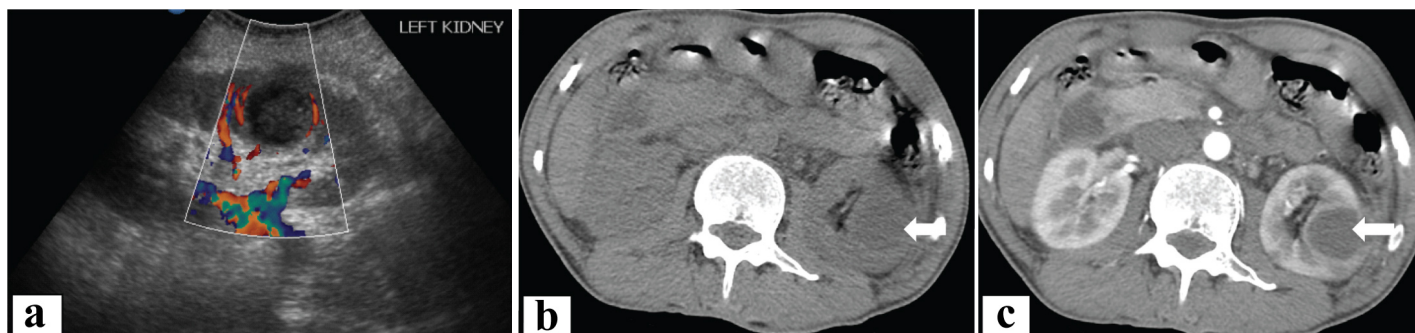
**[Table/Fig-3]:** Imaging parameter. (CT-computed tomography, PN-Pyelonephritis)

patients were diagnosed to have renal abscess [Table/Fig-4]. Evidence of emphysematous PN was present four of patients [Table/Fig-5]. Dilated pelvicalyceal system noted in three patients and renal calculi was noted in 15 patients.

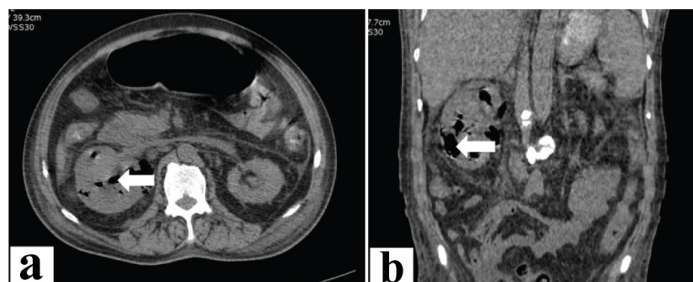
USG findings of PN were significantly associated with triad of PN symptoms, and those who had PN for the first time [Table/Fig-6, 7]. CT was helpful in detecting PN with complications, but there was no significant association between CT and clinical and biochemical parameters like duration of fever, leucocytosis, pyuria, septic shock and renal impairment.

## Treatment

All patients were treated with appropriate antibiotics and supportive therapy. Majority of them responded to the treatment without any mortality. Intervention in the form of Double J stenting was done in



**[Table/Fig-4]:** Renal abscess. a) USG image of left kidney showing a well-defined hypoechoic lesion with internal debris in mid-lower pole, not taking vascularity on color Doppler study; b & c) Plain and contrast enhanced CT images of the same patient showing a well-defined rim enhancing hypodense lesion in the left kidney.



**[Table/Fig-5]:** Emphysematous pyelonephritis. a) Axial and b) Coronal. Plain CT images show enlarged right kidney with multiple pockets of air seen in both renal calyces and parenchyma. Perinephric fat stranding noted.

USG findings	Dysuria	Fever, flank pain, dysuria	Fever	Flank pain	Total	Fisher's Exact Test
USG normal	2	6	0	3	11	0.003
USG bulky kidney, PNS +	0	61	1	4	66	
USG dilated PCS	0	16	0	1	17	
USG calculi	0	2	1	0	3	
USG cyst	1	1	0	0	2	
USG BPH	0	1	0	0	1	
Total	3	87	2	8	100	

**[Table/Fig-6]:** Comparison of ultrasound (USG) findings with triad of pyelonephritis (PN). (PNS – perinephric fat standing; PCS – pelvicalyceal system; BPH – benign prostatic hyperplasia).

USG	Current PN	Recurrent PN	Total	Fisher's Exact Test
USG normal	6	5	11	0.028
USG bulky kidney, PNS +	56	10	66	
USG dilated PCS	17	0	17	
USG calculi	2	1	3	
USG cyst	2	0	2	
USG BPH	1	0	1	
Total	84	16	100	

**[Table/Fig-7]:** Comparison of ultrasound (USG) findings with history pyelonephritis (PN). (PNS – perinephric fat standing; PCS – pelvicalyceal system; BPH – benign prostatic hyperplasia)

12 patients and one patient required percutaneous nephrostomy for renal abscess. Dialysis dependent state occurred in 7 (27%) out of 32 patients with chronic kidney disease.

## DISCUSSION

The objective of this study was to compare clinical and biochemical parameters with radiological findings (USG/CT) among patients diagnosed to have PN.

Mean age of our patient in this study was 48.7 years, majority of them were above 40 years. In Dhamotharan VN et al., study, majority were in the age group of 51-60 years [8]. Mean age of patient was 57.4 years in a study done by Kumar S et al., [9] and the mean age was 37 years in a study done by Rollino C et al., [10]. The prevalence of

PN was more common among females and this finding was similar to Kumar S et al., [9] and Rollino C et al., study [10]. This could be explained because of the presence of short urethra among female. In this study, the mean duration of symptoms prior to hospitalisation was 8.9 days and it was 18 days in Kumar S et al., study [9]. Mean length of hospitalisation was 6.8 days in present study and 11 days in a study by Rollino C et al., [10].

Classical triad of PN was present in 87 patients in this study which was higher than that found by Dhamotharan VM et al (35%) [8]. Renal dysfunction was present in 79 patients, of these 47 had acute kidney injury and 32 had chronic kidney disease. Study by Kumar S et al., found the renal dysfunction among 93% patients [9]. Microscopic haematuria was seen in 21% in this study, whereas it was 7% in Dhamotharan VM et al., group [8]. Urine cultures were positive in 24% of patients in present study, it was positive in 88.5% of patients in Kumar S et al., study [9]. Gram-negative bacilli, *Escherichia coli* were the most frequently isolated organism. Low yield of urine culture may be due to prior use of antibiotics or presence of atypical organisms which requires special culture media.

Diabetes mellitus was the most common comorbidity in our patients (69) which was similar to the findings by Dhamotharan VM et al., [8]. Diabetics are more prone to infection because of diabetic cystopathy, alteration of bacteria-host interaction and defective neutrophil bactericidal activity, impaired phagocytosis and chemotaxis [11-13]. Geerling SE et al., stated an increased adherence of *Escherichia coli* to diabetic uroepithelial cells and this was due to higher levels of glycosylated haemoglobin (HbA1c) [12]. Due to impaired production of cytokines, the *Escherichia coli* infection does not cause symptomatic urinary tract infection (UTI) in diabetic.

Nephrolithiasis had been reported to be a risk factor for PN. In this study 9% of patients had renal calculi on CT. Studies have found that renal stones act as nidus for bacteria so are associated with treatment failure for uncomplicated PN [13,14].

In this study, EPN was found in 4 patients on CT, all were in Class 2 based on classification proposed by Huang JJ and Tseng CC [7]. Three out of these four patients were diabetic. Patients improved after antibiotic therapy alone for two weeks.

Classical triad of symptoms to diagnose PN is not specific and sensitive. Studies have shown CT was better in detecting PN in the form of parenchymal abnormalities like perinephric stranding, bulky kidney, decreased or delayed cortical enhancement (on contrast), inflammatory masses, kidney enlargement or gas formation [15,16]. Majd M et al reported a sensitivity of 86.8% and specificity of 87.5% of CT in diagnosing APN, compared with 74.3% and 56.7% for USG [17].

In our study, USG abdomen was able to detect PN in 66/100 patients, while CT detected in 70/74 of patients, including renal abscess in three patients, emphysematous PN in four patients which was missed in USG. CT was found to reduce the risk of missing renal abscesses by about 37 times compared with USG [18].

There are few studies that correlate the clinical and biochemical parameters with CT diagnosed APN for identification of severity of



disease [2, 19-22]. Only two studies have shown good correlation of CT findings with clinical severity [2, 21].

## LIMITATION

The limitation of the study were that it is based on review of hospital records, CT reports were not available for 26 patients and CT did not show any significant association with clinical and biochemical parameters. Prospective studies with simultaneous comparison of USG and CT findings in patients with PN will help decide better mode of diagnosis.

## CONCLUSION

From our study, it was found that diabetics are at higher risk of developing PN. Early diagnosis helps prevent complications. Majority of PN patients respond to antibiotics when diagnosed early.

## REFERENCES

- [1] Stunell H, Buckley O, Feeney J, Geoghegan T, Browne RFJ, Torreggiani WC. Imaging of acute pyelonephritis in the adult. *Eur Radiol.* (2007) 17:1820-28.
- [2] Lim SK, Ng FC. Acute pyelonephritis and renal abscesses in adults—correlating clinical parameters with radiological (computer tomography) severity. *Ann Acad Med Singapore.* 2011; 40:407-13.
- [3] British Medical Research Council Bacteriuria Committee. Recommended terminology of urinary tract infection. *Br Med J.* 1979; 2:717-19.
- [4] Hill GS. *Uropathology.* New York: Churchill-Livingstone, 1989.
- [5] Talner LB, Davidson AJ, Lebowitz RL, Dalla Palma L, Goldman SM. Acute pyelonephritis: can we agree on terminology? *Radiology.* 1994; 192:297-305.
- [6] Craig WD, Wagner BJ, Travis MD. Pyelonephritis: radiologic-pathologic review. *Radiographic* 2008; 28:255-76.
- [7] Huang JJ, Tseng CC. Emphysematous pyelonephritis: Clinicoradiological classification, management, prognosis, and pathogenesis. *Arch Intern Med.* 2000; 160(6):797-805.
- [8] Dhamotharan VM, Ramadurai S, Gopalan S, Arthur P. Study of the clinical profile of patients with CT proven acute pyelonephritis in a tertiary care hospital. *Med. Res. Chron.,* 2016, 3 (1), 64-68.
- [9] Kumar S, Ramachandran R, Mete U, Mittal T, Dutta P, Kumar V, et al. Acute pyelonephritis in diabetes mellitus: Single center experience. *Indian J Nephrol.* 2014 Nov-Dec; 24(6): 367-71.
- [10] Rollino C, Beltrame G, Ferro M, Quattrocchio G, Sandrone M, Quarello F. Acute pyelonephritis in adults: a case series of 223 patients. *Nephrol Dial Transplant* (2012) 27: 3488-93.
- [11] Repine JE, Clawson CC, Goetz FC. Bactericidal function of neutrophils from patients with acute bacteria infections and from diabetes. *J Infect Dis* 1980; 142: 869-75.
- [12] Geerlings SE, Meiland R, van Lith EC, Brouwer EC, Gaastra W, Hoepelman AI. Adherence of type 1-fimbriated *Escherichia coli* to uroepithelial cells: more in diabetic women than in control subjects. *Diabetes Care.* 2002; 25:1405-09.
- [13] Pertel PE, Haverstock D. Risk factors for a poor outcome after therapy for acute pyelonephritis. *BJU Int.* 2006; 98:141-47.
- [14] Efsthathiou SP, Pefanis AV, Tsioulos DI, Zacharos ID, Tsiakou AG, Mitromaras AG, et al. Acute pyelonephritis in adults: prediction of mortality and failure of treatment. *Arch Intern Med.* 2003; 163:1206-12.
- [15] Kawashima A, Sandler CM, Ernst RD, Goldman SM, Raval B, Fishman EK. Renal inflammatory disease: the current role of CT. *Crit Rev Diagn Imaging.* 1997; 38:369-415.
- [16] Goldman SM, Fishman EK. Upper urinary tract infection: the current role of CT, ultrasound and MRI. *Semin Ultrasound CT MR.* 1991; 12:335-60.
- [17] Majd M, Blasko ARN, Markle BM, Rana ES, Pohl HG, Park JS, et al. Acute pyelonephritis: comparison of diagnosis with 99 m-Tc DMSA, SPECT, spiral CT, MR imaging and power Doppler US in and experimental pig model. *Radiology.* 2001; 218:101-08.
- [18] Stojadinovic M, Micic S, Milovanovic D. Ultrasonographic and computed tomography findings in renal suppurations: performance indicators and risks for diagnostic failure. *UrolInt.* 2008; 80:389-97.
- [19] Rollino C, Boero R, Ferro M, Anglesio A, Vaudano GP, Cametti A, et al. Acute pyelonephritis: analysis of 52 cases. *Ren Fail.* 2002; 24:601-08.
- [20] Piccoli GB, Colla L, Burdese M, Marcuccio C, Mezza E, Maass J, et al. Development of kidney scars after acute uncomplicated pyelonephritis: relationship with clinical, laboratory and imaging data at diagnosis. *World J Urol.* 2006; 24:66-73.
- [21] Huang JJ, Sung JM, Chen KW, Ruaan MK, Shu GH, Chuang YC, et al. Acute bacterial nephritis: A clinic radiologic correlation based on Computed Tomography. *Am J Med.* 1992; 93:289-98.
- [22] Ha SK, Seo JK, Kim SJ, Park SH, Park CH, Lee HY, et al. Acute pyelonephritis focusing on perfusion defects on contrast enhanced computerized tomography. *The Korean Journal of Internal Medicine.* June 1997. Vol12; No 2.

### PARTICULARS OF CONTRIBUTORS:

1. Assistant Professor, Department of Nephrology, Institute of Nephrourology, Bengaluru, Karnataka, India.
2. Associate Professor, Department of Radiology, Institute of Nephrourology, Bengaluru, Karnataka, India.

### NAME, ADDRESS, E-MAIL ID OF THE CORRESPONDING AUTHOR:

Dr. Leelavathi Venkatesh,  
Door No. 39, 1<sup>st</sup> Cross, Nagappa Block, M.K.K. Road, Srirampuram Post, Bengaluru-560021, Karnataka, India.  
E-mail: Leelavathi.v@gmail.com

Date of Submission: **Feb 06, 2017**  
Date of Peer Review: **Feb 21, 2017**  
Date of Acceptance: **Apr 19, 2017**  
Date of Publishing: **Jun 01, 2017**

FINANCIAL OR OTHER COMPETING INTERESTS: None.